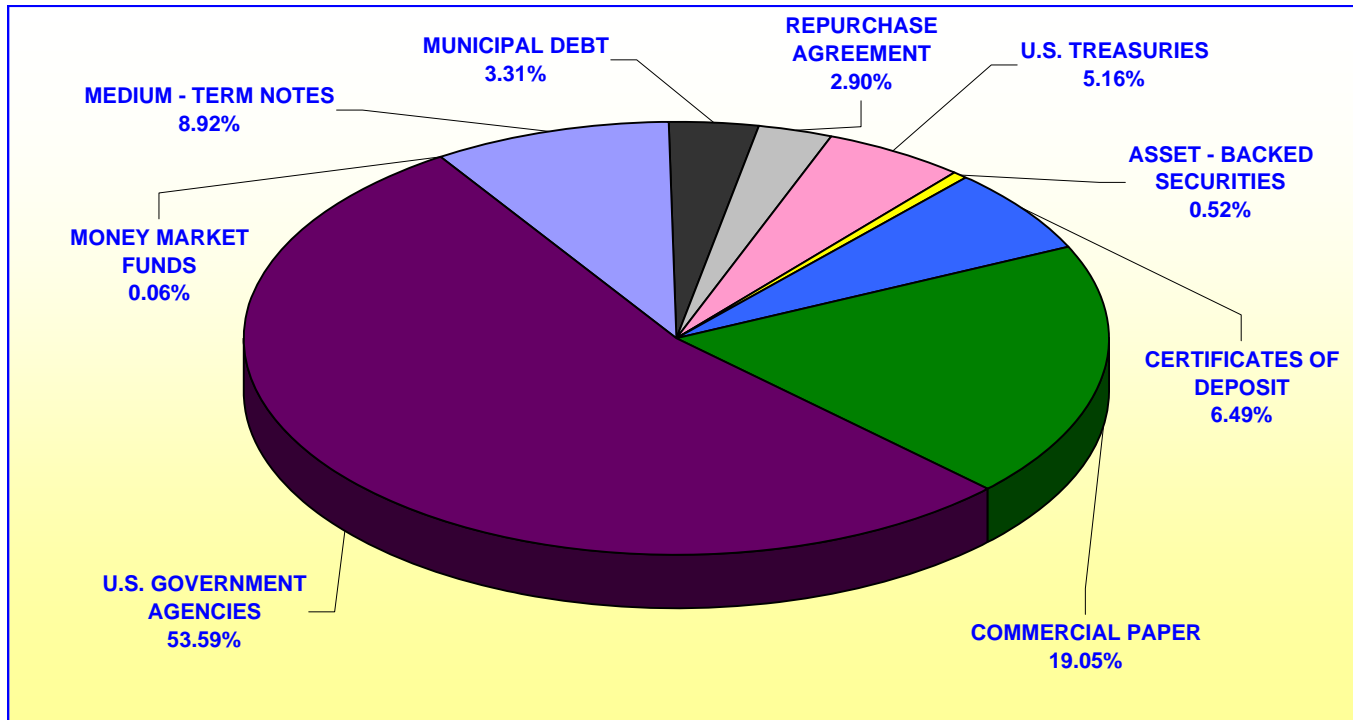


**ORANGE COUNTY TREASURER - TAX COLLECTOR  
ORANGE COUNTY INVESTMENT POOL  
PORTFOLIO COMPOSITION - COMBINED \*\***

April 30, 2010



	In Thousands
U.S. TREASURIES	\$ 190,018
ASSET-BACKED SECURITIES	19,187
CERTIFICATES OF DEPOSIT	239,008
COMMERCIAL PAPER	701,232
U.S. GOVERNMENT AGENCIES	1,973,017
MONEY MARKET FUNDS	2,047
MEDIUM-TERM NOTES	328,331
MUNICIPAL DEBT	121,818
REPURCHASE AGREEMENT	<u>106,797</u>
<b>TOTAL</b>	<b><u>\$ 3,681,455</u></b>

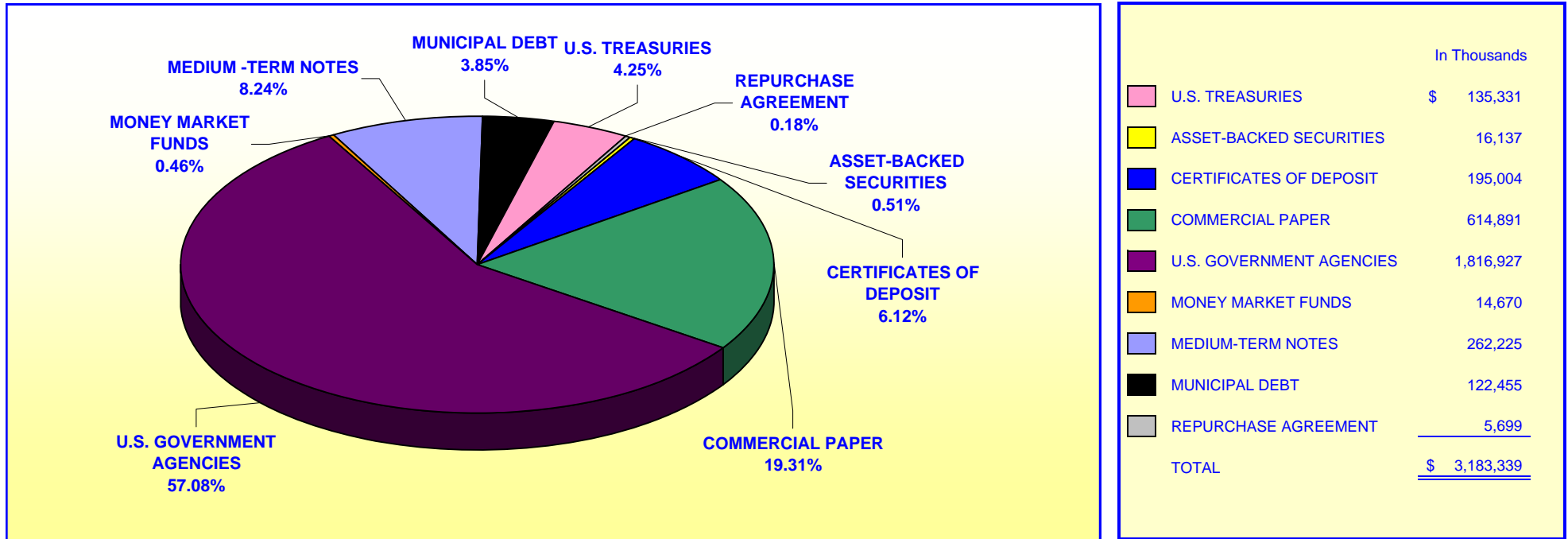
*Investment Composition Is In Compliance With The Orange County Treasurer's Investment Policy Statement*

*\*County Investment Pool Includes: Money Market Fund, Extended Fund, & Extended Fund B*

*\*\* Calculated Using Market Value at 04/30/2010*

**ORANGE COUNTY TREASURER - TAX COLLECTOR  
ORANGE COUNTY EDUCATIONAL INVESTMENT POOL  
PORTFOLIO COMPOSITION - COMBINED \*\***

April 30, 2010



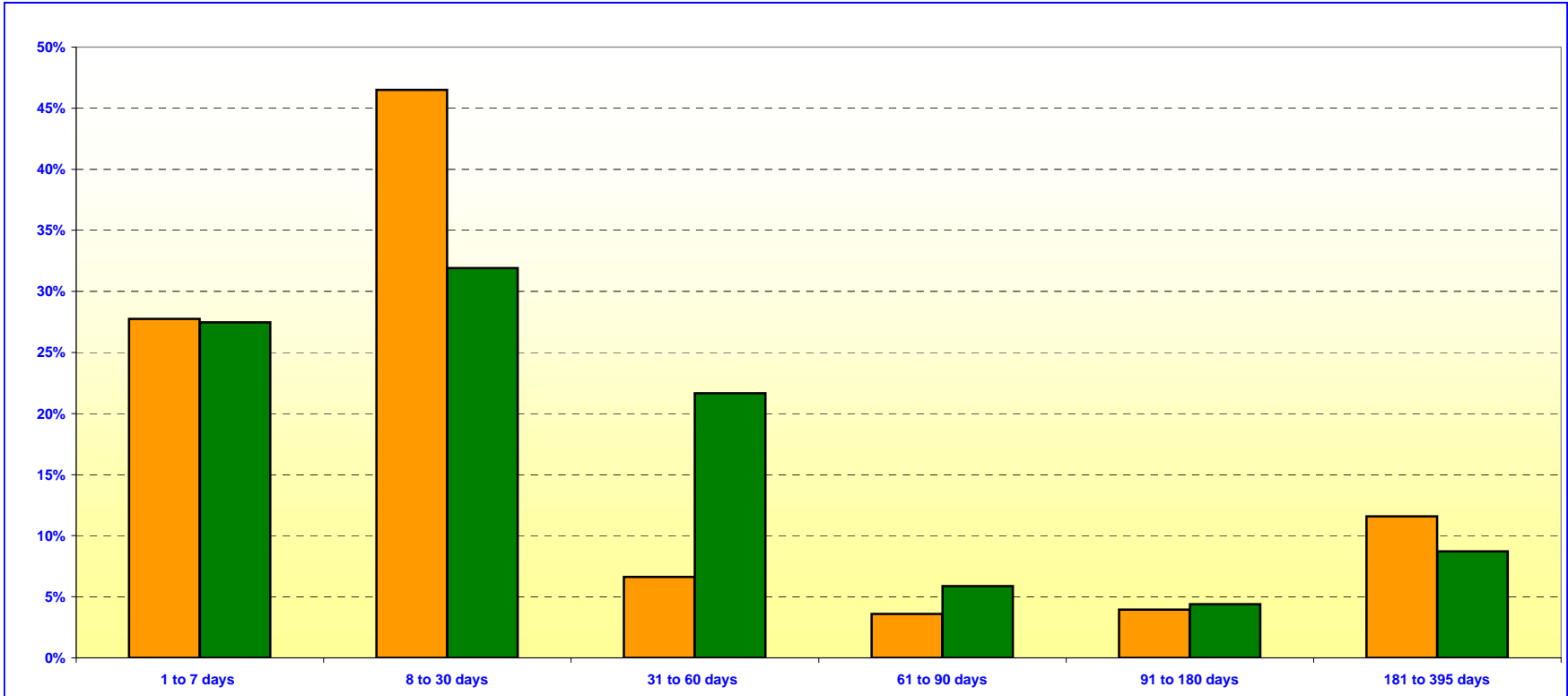
*Investment Composition Is In Compliance With The Orange County Treasurer's Investment Policy Statement*

*\*Educational Investment Pool Includes: Money Market Fund, Extended Fund, & Extended Fund B*

*\*\* Calculated Using Market Value at 04/30/2010*

**ORANGE COUNTY TREASURER - TAX COLLECTOR**  
**ORANGE COUNTY MONEY MARKET FUND AND EDUCATIONAL MONEY MARKET FUND**  
**MATURITIES DISTRIBUTION**

April 30, 2010



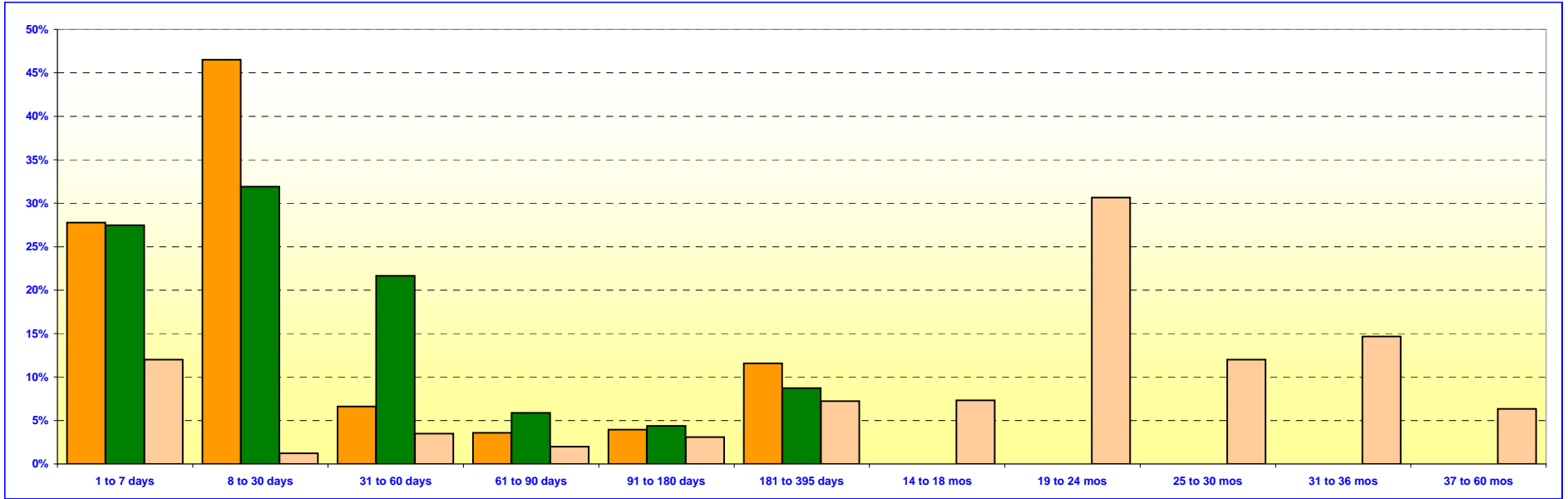
<b>O.C. INVESTMENT POOL MONEY MARKET FUND</b>		
	In Thousands	%
1 TO 7 DAYS	\$ 626,514	27.76%
8 TO 30 DAYS	1,049,812	46.51%
31 TO 60 DAYS	149,500	6.62%
61 TO 90 DAYS	81,000	3.59%
91 TO 180 DAYS	89,065	3.94%
181 TO 395 DAYS	261,329	11.58%
<b>TOTAL</b>	<b>\$ 2,257,220</b>	<b>100.00%</b>

<b>O.C. EDUCATIONAL MONEY MARKET FUND</b>		
	In Thousands	%
1 TO 7 DAYS	\$ 503,289	27.46%
8 TO 30 DAYS	585,022	31.91%
31 TO 60 DAYS	397,049	21.66%
61 TO 90 DAYS	107,526	5.87%
91 TO 180 DAYS	80,475	4.39%
181 TO 395 DAYS	159,755	8.71%
<b>TOTAL</b>	<b>\$ 1,833,116</b>	<b>100.00%</b>

***Maturity Limits Are In Compliance With The Orange County Treasurer's Investment Policy Statement***

Floating Rate Notes are deemed to have a maturity date equal to their next interest reset date.  
 At 04/30/2010 Floating Rate Notes comprise 31.62% and 31.90% of the O.C. Money Market Fund and Educational Money Market Fund respectively.

**ORANGE COUNTY TREASURER - TAX COLLECTOR  
ORANGE COUNTY AND EDUCATIONAL INVESTMENT POOLS  
MATURITIES DISTRIBUTION  
April 30, 2010**



O.C. INVESTMENT POOL MONEY MARKET FUND		
	In Thousands	%
1 TO 7 DAYS	\$ 626,514	27.76%
8 TO 30 DAYS	1,049,812	46.51%
31 TO 60 DAYS	149,500	6.62%
61 TO 90 DAYS	81,000	3.59%
91 TO 180 DAYS	89,065	3.94%
181 TO 395 DAYS	261,329	11.58%
<b>TOTAL</b>	<b>\$ 2,257,220</b>	<b>100.00%</b>

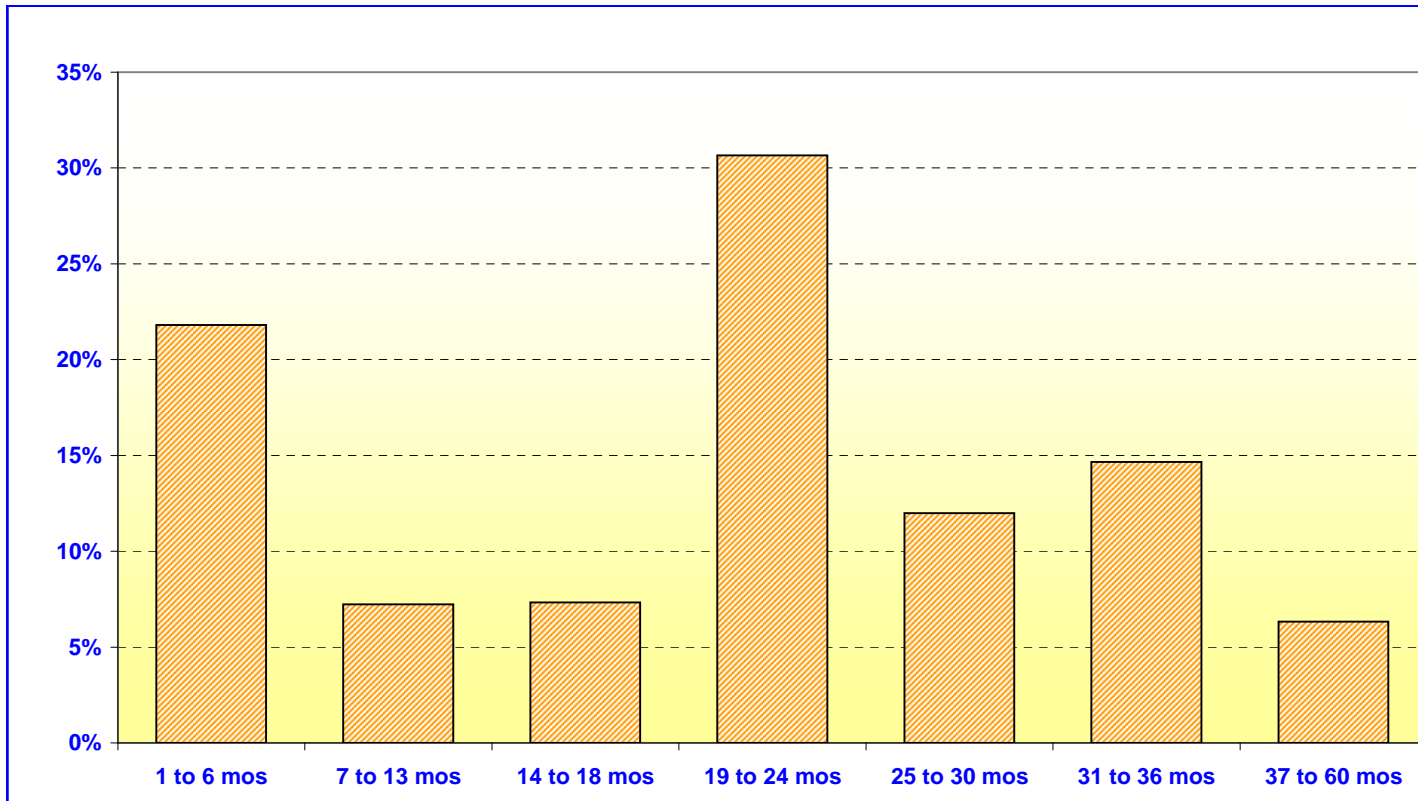
O.C. EDUCATIONAL MONEY MARKET FUND		
	In Thousands	%
1 TO 7 DAYS	\$ 503,289	27.46%
8 TO 30 DAYS	585,022	31.91%
31 TO 60 DAYS	397,049	21.66%
61 TO 90 DAYS	107,526	5.87%
91 TO 180 DAYS	80,475	4.39%
181 TO 395 DAYS	159,755	8.71%
<b>TOTAL</b>	<b>\$ 1,833,116</b>	<b>100%</b>

O.C. INVESTMENT POOL EXTENDED FUND (Included Extended Fund B)		
	In Thousands	%
1 TO 7 DAYS	\$ 332,000	12.00%
8 TO 30 DAYS	33,800	1.22%
31 TO 60 DAYS	96,829	3.50%
61 TO 90 DAYS	54,803	1.98%
91 TO 180 DAYS	85,675	3.10%
181 TO 395 DAYS	200,000	7.23%
14 TO 18 MONTHS	202,660	7.33%
19 TO 24 MONTHS	848,300	30.66%
25 TO 30 MONTHS	331,727	11.99%
31 TO 36 MONTHS	405,647	14.66%
37 TO 60 MONTHS	175,000	6.33%
<b>TOTAL</b>	<b>\$ 2,766,441</b>	<b>100.00%</b>

*Maturity Limits Are In Compliance With The Orange County Treasurer's Investment Policy Statement*

Floating Rate Notes are deemed to have a maturity date equal to their next interest reset date.  
At 04/30/2010, Floating Rate Notes comprise 31.62%, 2.79%, and 31.90% of the O.C. Money Market Funds, Extended Funds, and Educational Money Market Fund respectively.

**ORANGE COUNTY TREASURER - TAX COLLECTOR**  
**ORANGE COUNTY - EXTENDED FUND**  
**MATURITIES DISTRIBUTION**  
 April 30, 2010



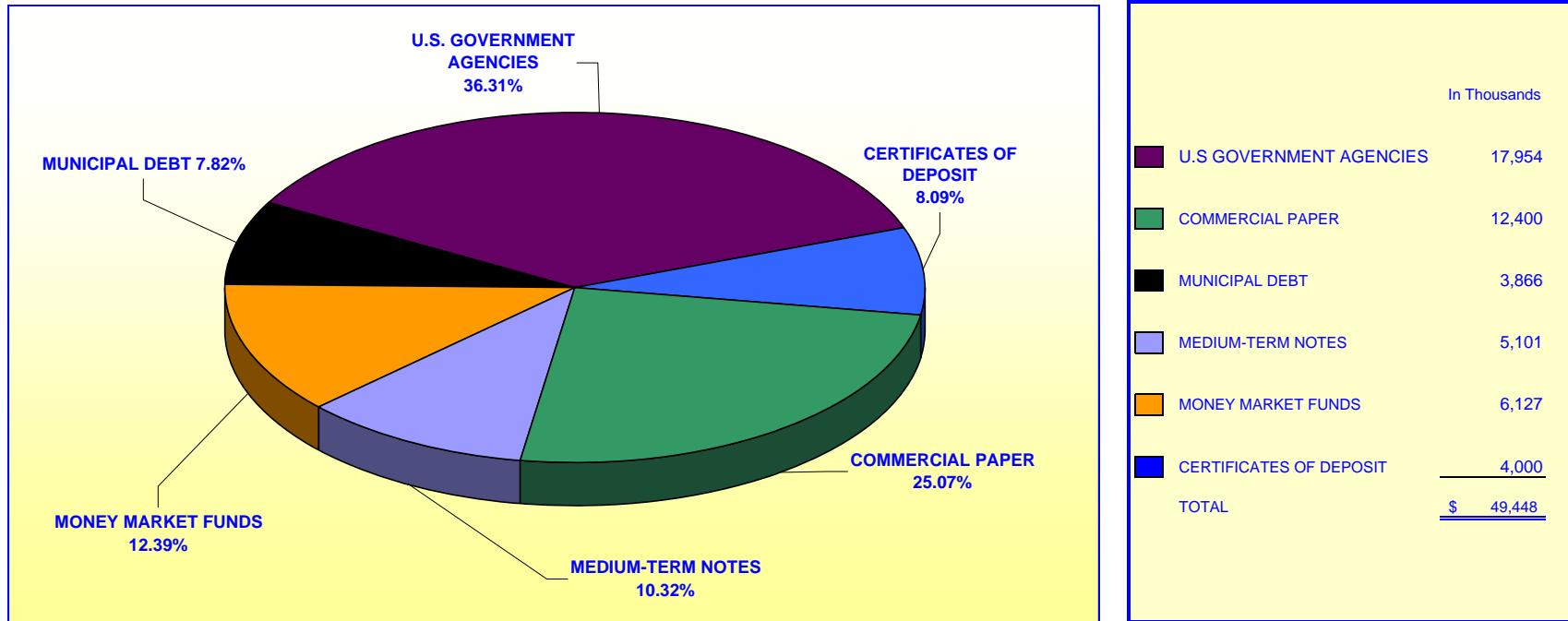
<b>ORANGE COUNTY EXTENDED FUND</b> (includes Extended Fund B)		
	In Thousands	%
1 TO 6 MOS	\$ 603,107	21.80%
7 TO 13 MOS	200,000	7.23%
14 TO 18 MOS	202,660	7.33%
19 TO 24 MOS	848,300	30.66%
25 TO 30 MOS	331,727	11.99%
31 TO 36 MOS	405,647	14.66%
37 TO 60 MOS	175,000	6.33%
<b>TOTAL</b>	<b>\$ 2,766,441</b>	<b>100.00%</b>

***Maturity Limits Are In Compliance With The Orange County Treasurer's Investment Policy Statement***

Floating Rate Notes are deemed to have a maturity date equal to their next interest reset date.  
 At 04/30/2010, Floating Rate Notes comprise 2.79% of the O.C. Extended Fund.

**ORANGE COUNTY TREASURER - TAX COLLECTOR  
JOHN WAYNE AIRPORT INVESTMENT POOL  
PORTFOLIO COMPOSITION \*\***

April 30, 2010

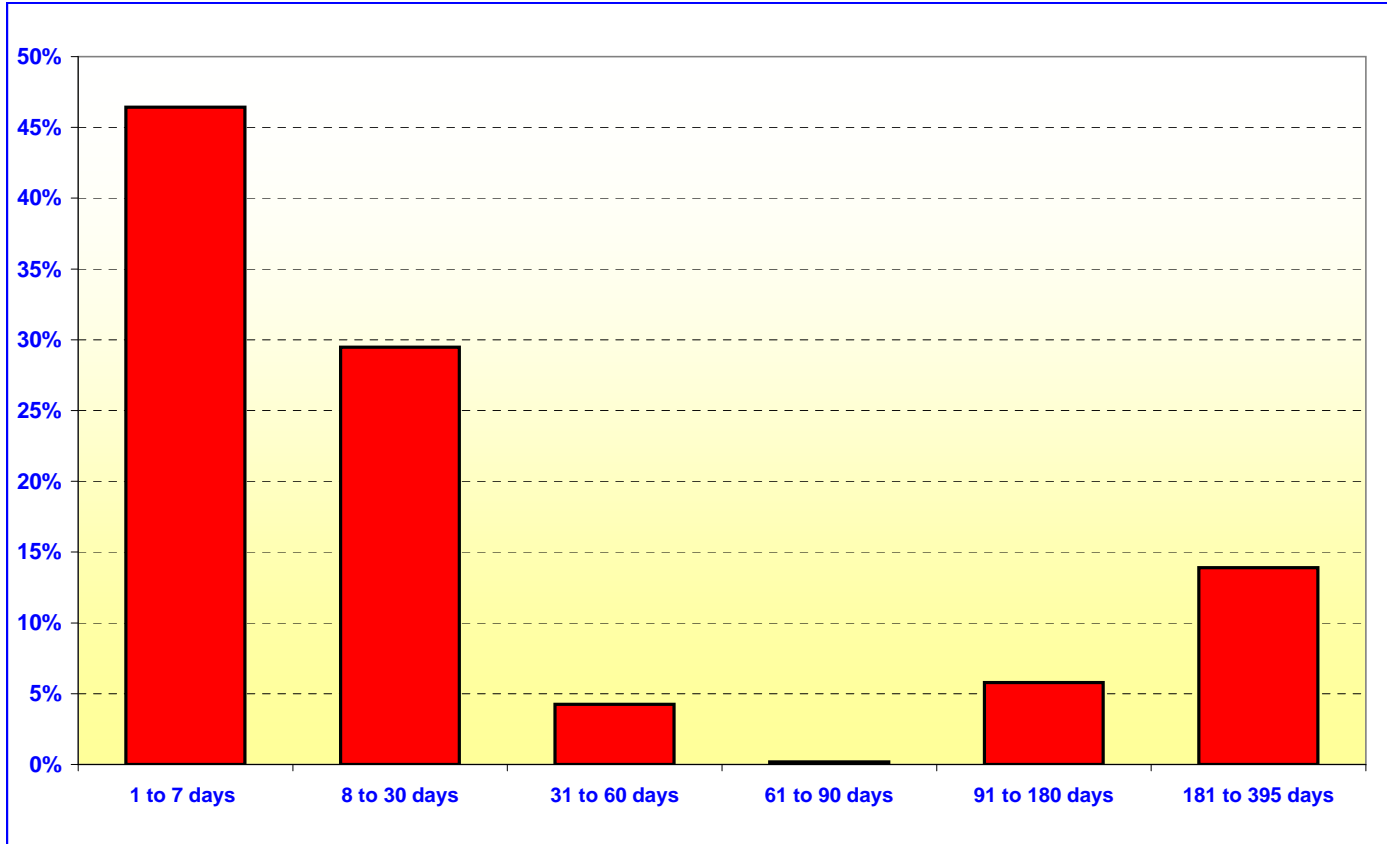


*Investment Composition Is In Compliance With The Orange County Treasurer's Investment Policy Statement*

*\*\* Calculated Using Market Value at 04/30/2010*

**ORANGE COUNTY TREASURER - TAX COLLECTOR  
JOHN WAYNE AIRPORT INVESTMENT POOL  
MATURITIES DISTRIBUTION**

April 30, 2010



JOHN WAYNE AIRPORT		
	In Thousands	%
1 TO 7 DAYS	\$ 22,875	46.43%
8 TO 30 DAYS	14,525	29.47%
31 TO 60 DAYS	2,090	4.24%
61 TO 90 DAYS	90	0.18%
91 TO 180 DAYS	2,850	5.78%
181 TO 395 DAYS	6,850	13.90%
<b>TOTAL</b>	<u>\$ 49,280</u>	<u>100.00%</u>

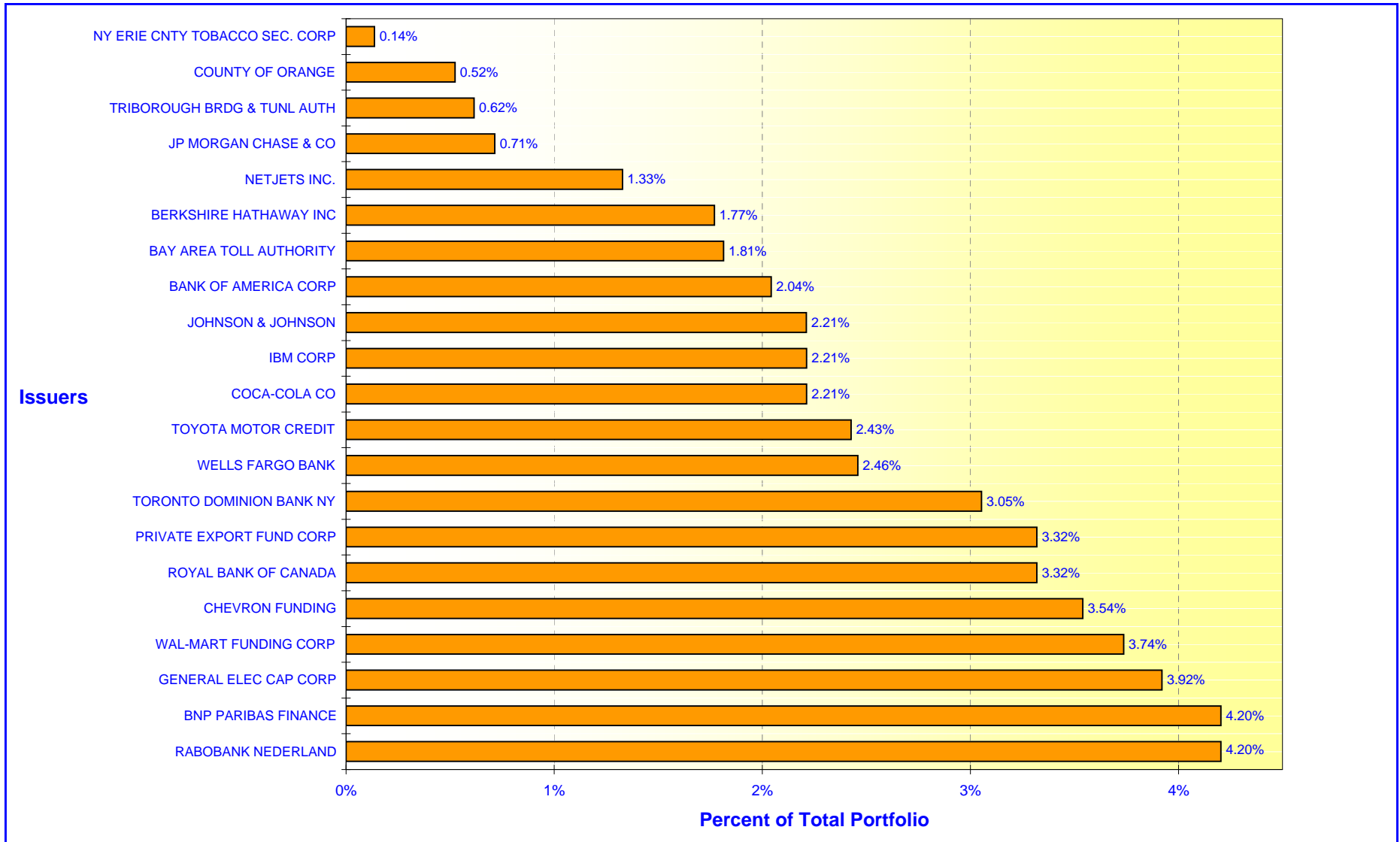
*Maturity Limits Are In Compliance With The Orange County Treasurer's Investment Policy Statement*

Floating Rate Notes are deemed to have a maturity date equal to their next interest reset date.  
At 04/30/2010, Floating Rate Notes comprise 23.04% of the John Wayne Airport

# ORANGE COUNTY TREASURER - TAX COLLECTOR

## ORANGE COUNTY MONEY MARKET FUND - ISSUER CONCENTRATION

April 30, 2010

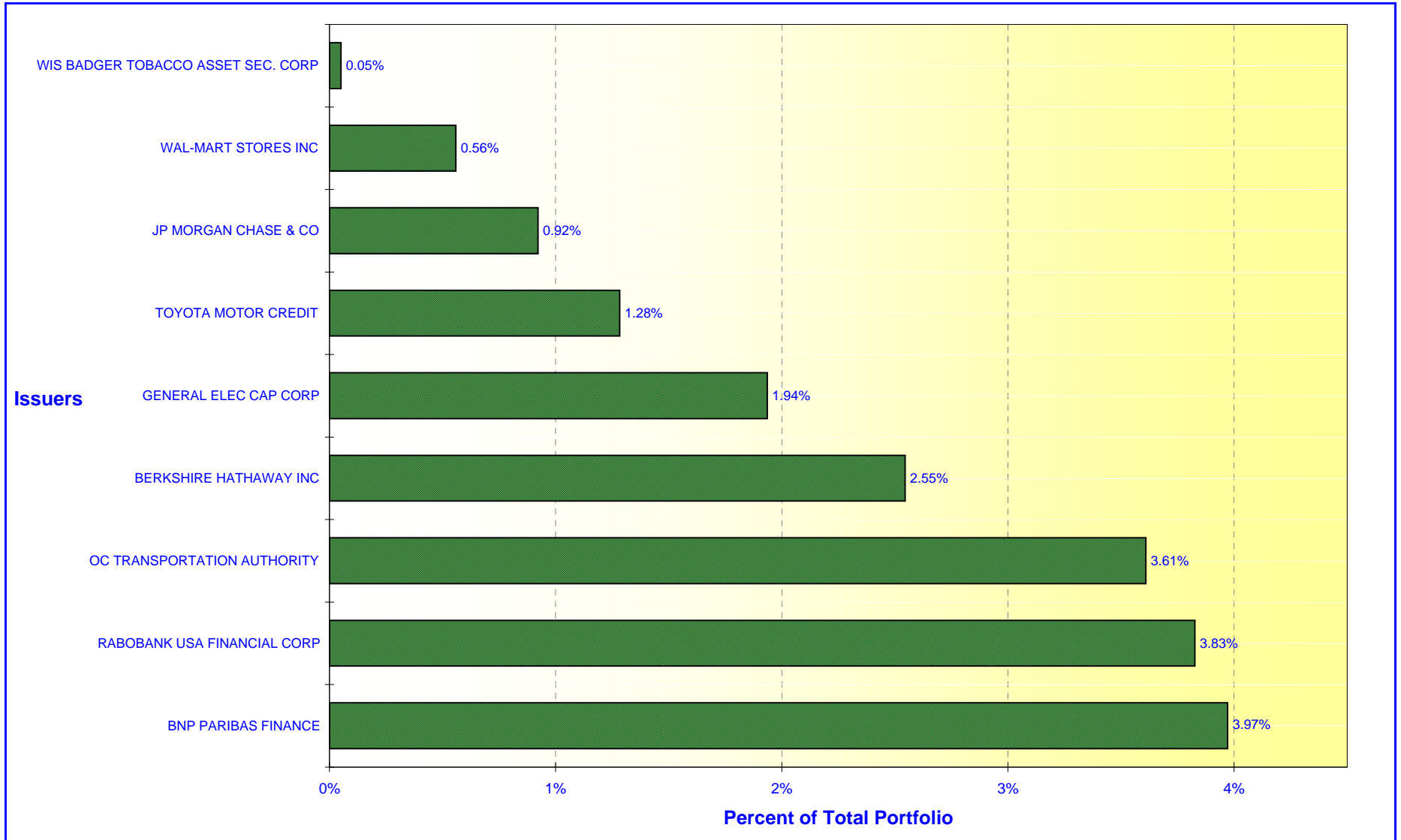




# ORANGE COUNTY TREASURER - TAX COLLECTOR

## ORANGE COUNTY EXTENDED FUND - ISSUER CONCENTRATION

April 30, 2010



# ORANGE COUNTY TREASURER - TAX COLLECTOR

## EDUCATIONAL MONEY MARKET FUND - ISSUER CONCENTRATION

April 30, 2010

