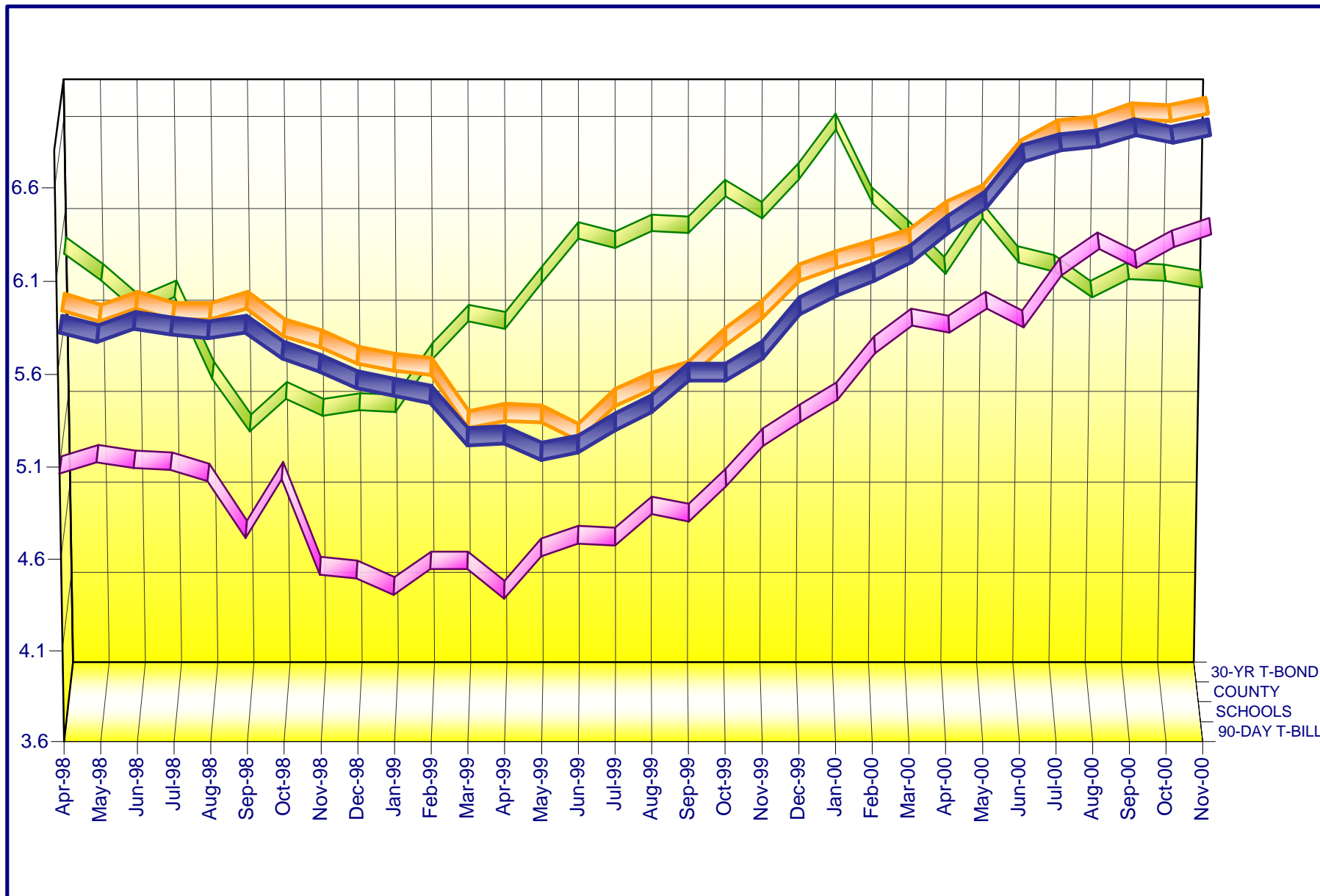
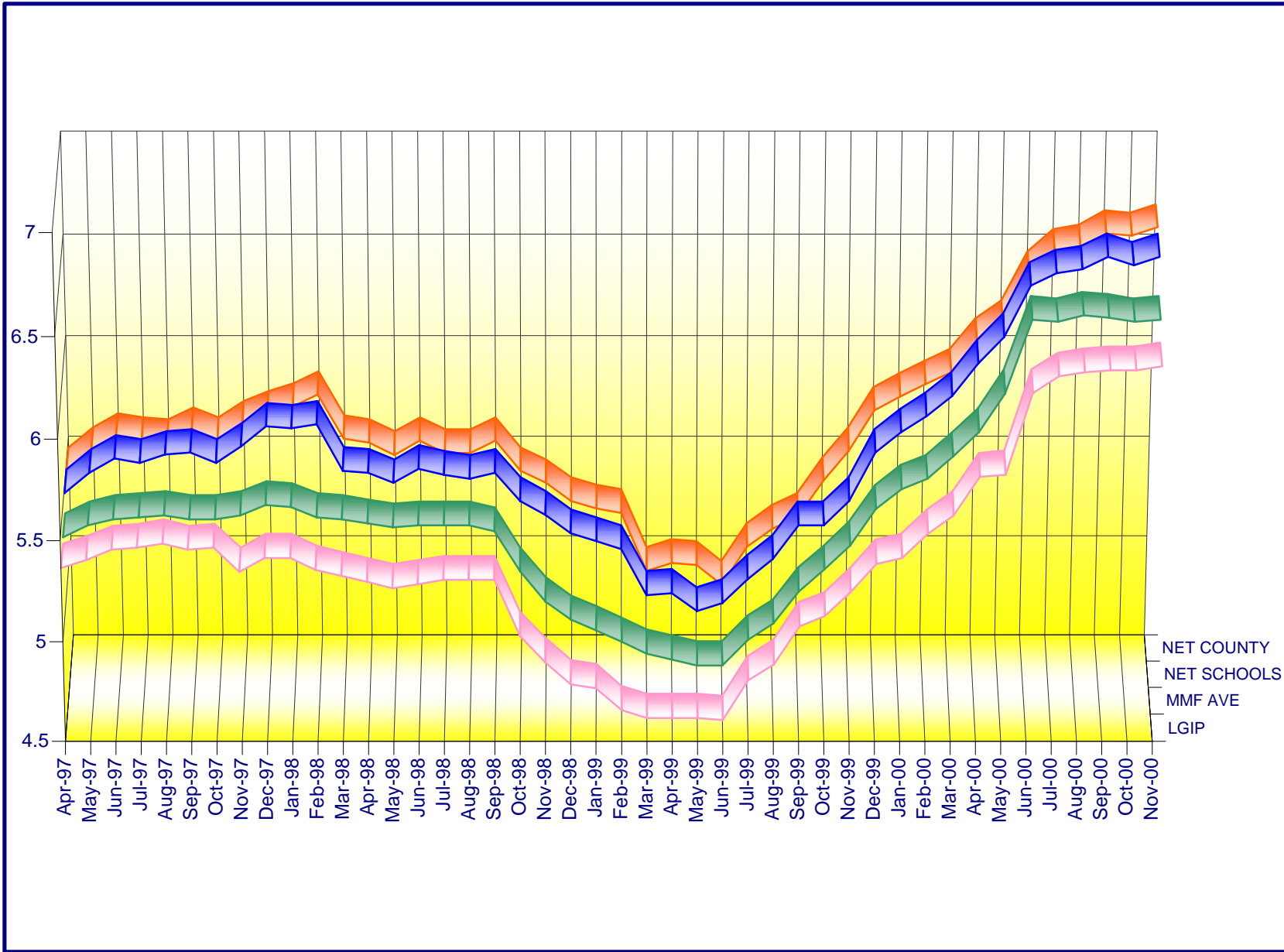


ORANGE COUNTY MONEY MARKET POOLS vs BENCHMARKS



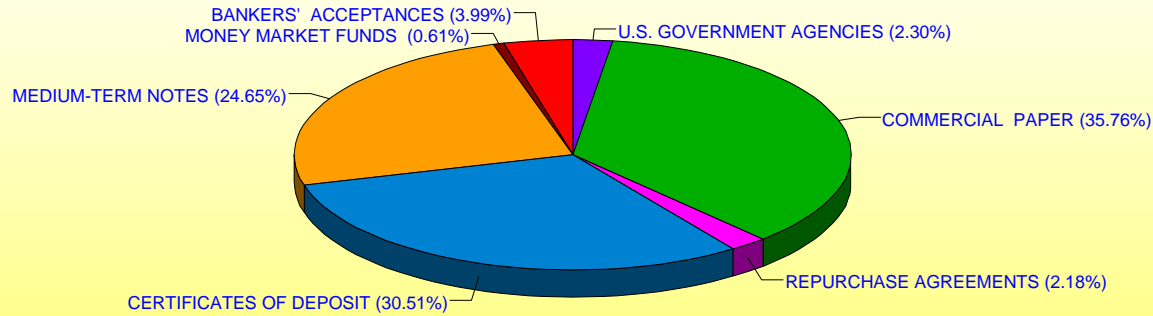
ORANGE COUNTY MONEY MARKET POOLS vs BENCHMARKS (NET)

For The Period April, 1997 to Nov, 2000



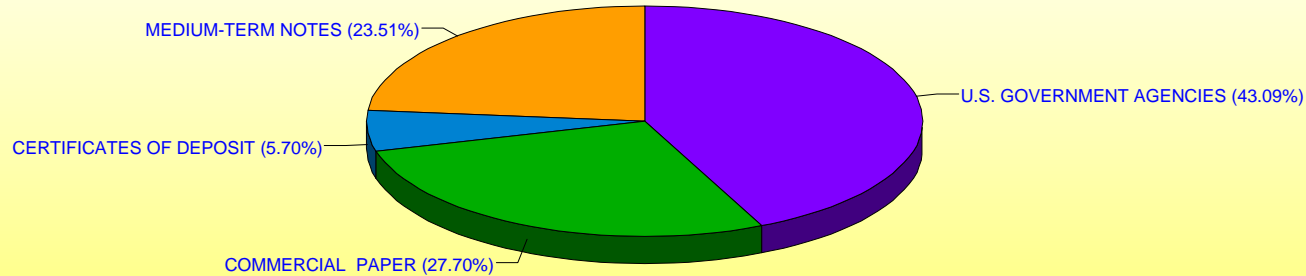
**ORANGE COUNTY TREASURER - TAX COLLECTOR
ORANGE COUNTY INVESTMENT POOL
PORTFOLIO COMPOSITION - BY FUND**
November 30, 2000**

MONEY MARKET FUND



	In Thousands
U.S. GOVERNMENT AGENCIES	\$39,987
COMMERCIAL PAPER	622,200
REPURCHASE AGREEMENTS	38,000
CERTIFICATES OF DEPOSIT	530,876
MEDIUM-TERM NOTES	428,853
MONEY MARKET FUNDS	10,652
BANKERS' ACCEPTANCES	<u>69,383</u>
TOTAL	<u>\$1,739,951</u>

EXTENDED FUND

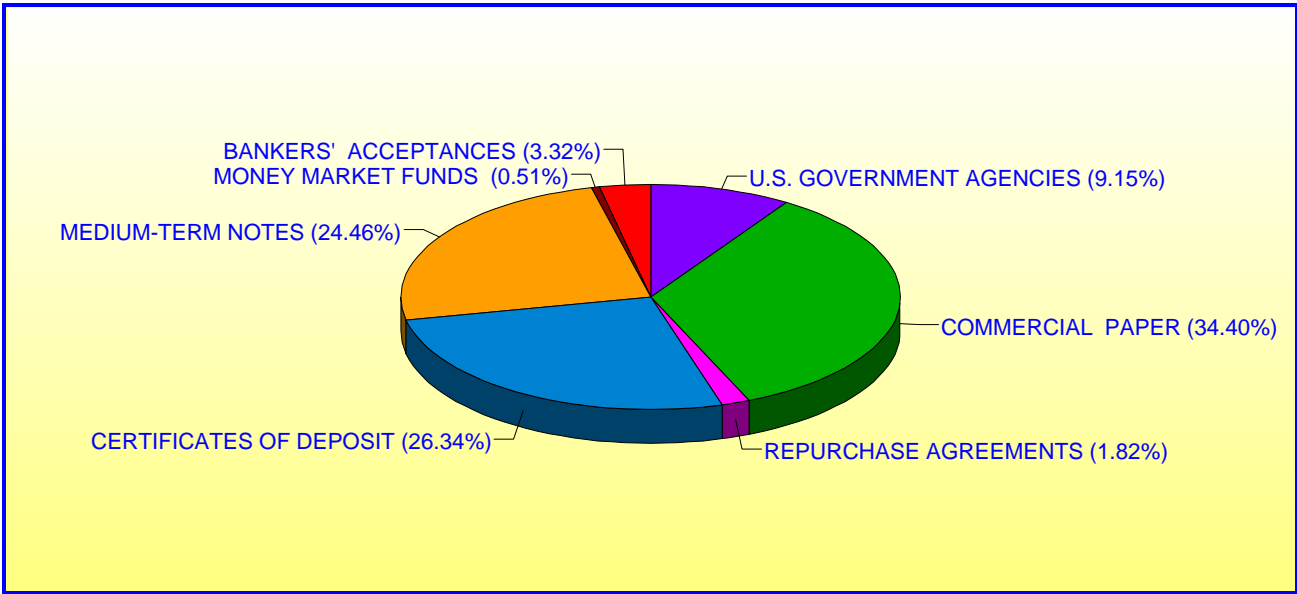


	In Thousands
U.S. GOVERNMENT AGENCIES	\$151,468
COMMERCIAL PAPER	97,363
CERTIFICATES OF DEPOSIT	20,038
MEDIUM TERM NOTES	<u>82,633</u>
TOTAL	<u>\$351,502</u>

Investment Composition Is In Compliance With The Orange County Treasurer's Investment Policy Statement

** Calculated Based Upon Market Value at 11/30/00

ORANGE COUNTY TREASURER - TAX COLLECTOR
ORANGE COUNTY INVESTMENT POOL
PORTFOLIO COMPOSITION - COMBINED **
November 30, 2000

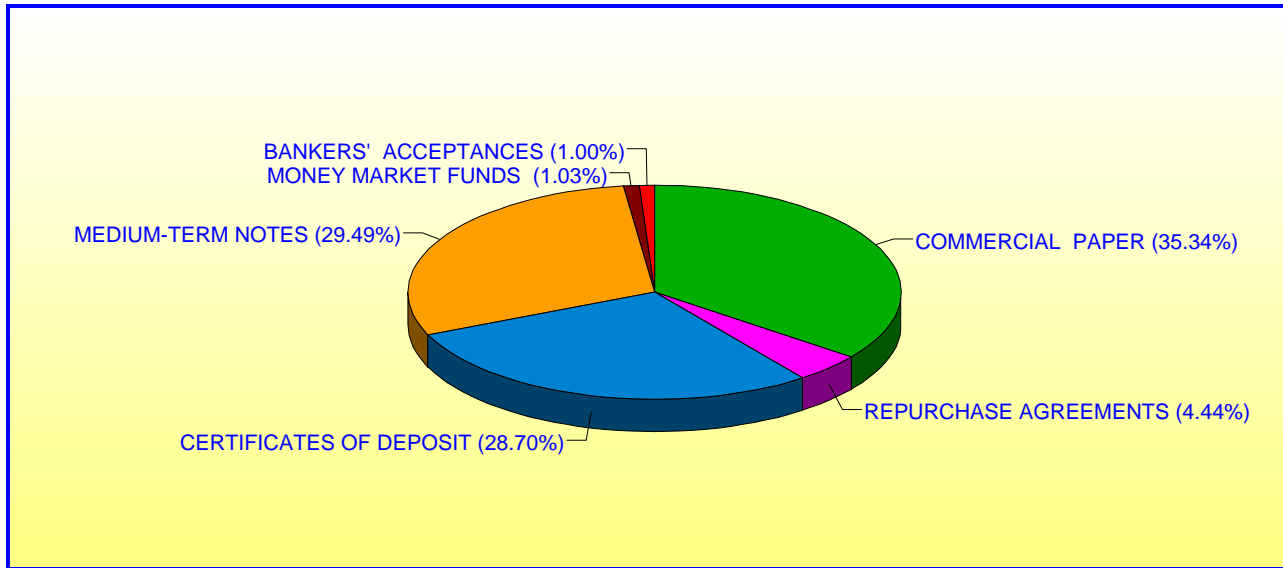


In Thousands	
U.S. GOVERNMENT AGENCIES	\$191,456
COMMERCIAL PAPER	719,563
REPURCHASE AGREEMENTS	38,000
CERTIFICATES OF DEPOSIT	550,913
MEDIUM-TERM NOTES	511,486
MONEY MARKET FUNDS	10,652
BANKERS' ACCEPTANCES	69,383
TOTAL	<u><u>\$2,091,453</u></u>

Investment Composition Is In Compliance With The Orange County Treasurer's Investment Policy Statement

***** Calculated Based Upon Market Value at 11/30/00***

ORANGE COUNTY TREASURER - TAX COLLECTOR
ORANGE COUNTY EDUCATIONAL INVESTMENT POOL
PORTFOLIO COMPOSITION **
November 30, 2000



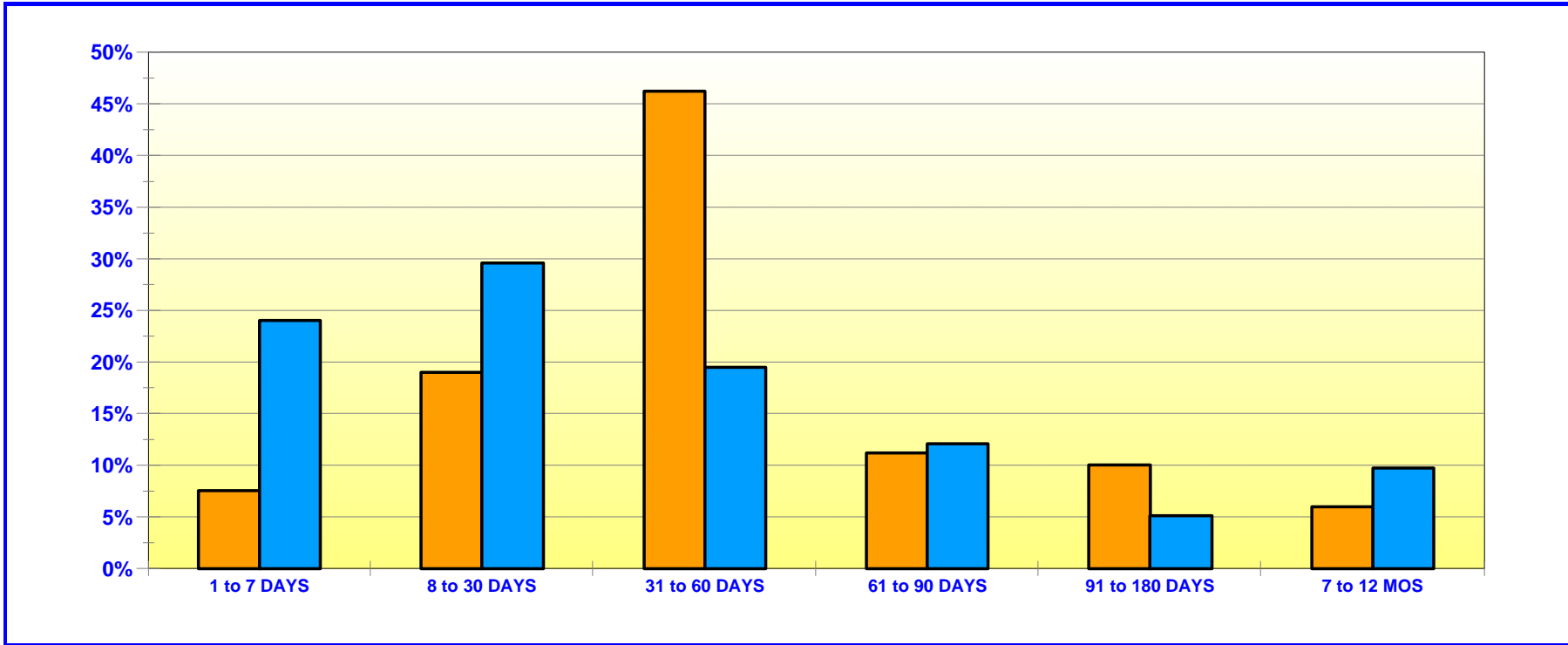
	In Thousands
COMMERCIAL PAPER	\$342,222
REPURCHASE AGREEMENTS	43,000
CERTIFICATES OF DEPOSIT	277,997
MEDIUM-TERM NOTES	285,604
MONEY MARKET FUNDS	9,963
BANKERS' ACCEPTANCES	<u>9,718</u>
TOTAL	<u><u>\$968,504</u></u>

Investment Composition Is In Compliance With The Orange County Treasurer's Investment Policy Statement

***** Calculated Based Upon Market Value at 11/30/00***

ORANGE COUNTY TREASURER - TAX COLLECTOR
ORANGE COUNTY MONEY MARKET FUND AND EDUCATIONAL INVESTMENT POOL
MATURITIES DISTRIBUTION AT COST

November 30, 2000



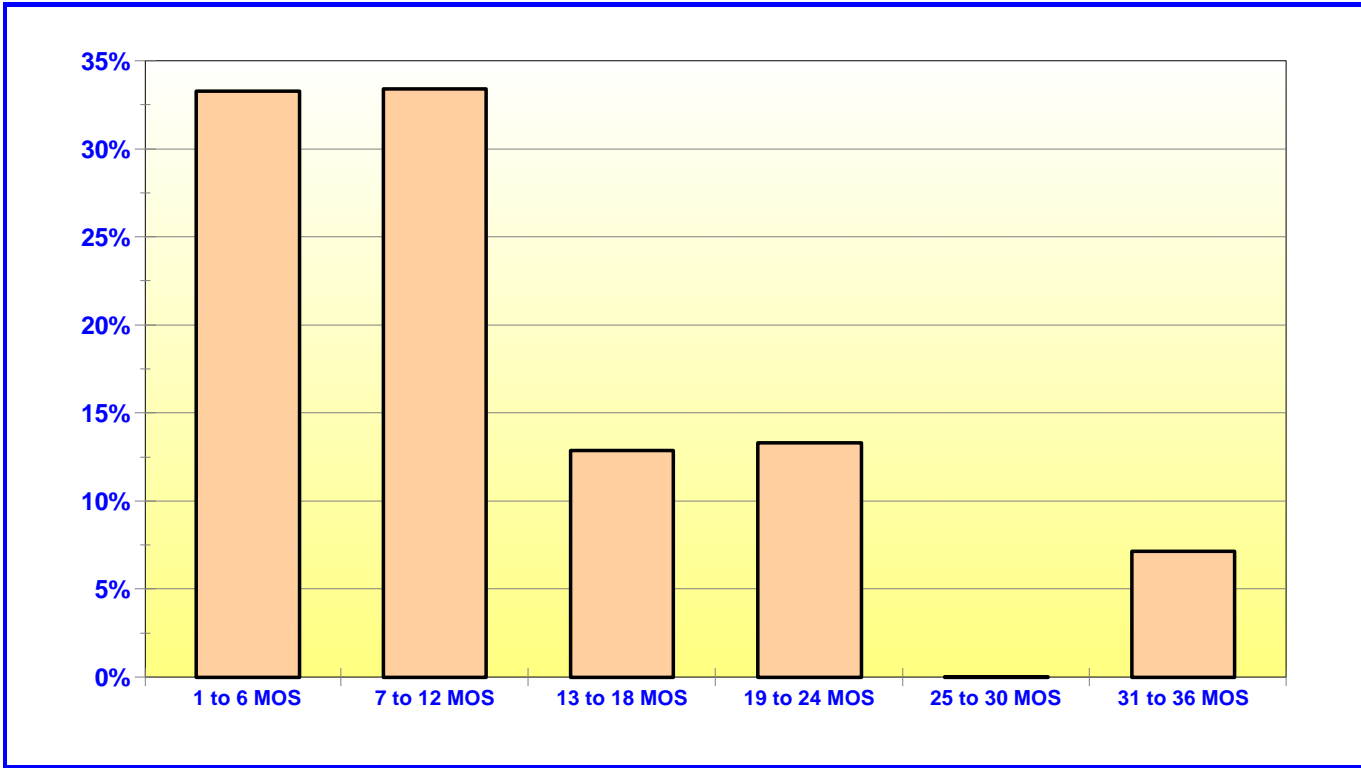
O.C. INVESTMENT POOL MONEY MARKET FUND		
	In Thousands	%
1 TO 7 DAYS	\$131,354	7.56%
8 TO 30 DAYS	330,191	19.00%
31 TO 60 DAYS	803,862	46.25%
61 TO 90 DAYS	194,316	11.18%
91 TO 180 DAYS	174,346	10.03%
7 TO 12 MOS	103,925	5.98%
TOTAL	\$1,737,994	100.00%

O.C. EDUCATIONAL INVESTMENT POOL		
	In Thousands	%
1 TO 7 DAYS	\$232,125	24.00%
8 TO 30 DAYS	286,299	29.60%
31 TO 60 DAYS	188,271	19.47%
61 TO 90 DAYS	116,723	12.07%
91 TO 180 DAYS	49,601	5.13%
7 TO 12 MOS	94,071	9.73%
TOTAL	\$967,090	100.00%

Maturity Limits Are In Compliance With The Orange County Treasurer's Investment Policy Statement

Floating Rate Notes are deemed to have a maturity date equal to their next interest reset date.
 At November 30, 2000, Floating Rate Notes comprise 10.93% and 9.30% of the O.C. Money Market Fund and Educational Investment Pool, respectively.

ORANGE COUNTY TREASURER - TAX COLLECTOR
ORANGE COUNTY INVESTMENT POOL - EXTENDED FUND
MATURITIES DISTRIBUTION AT COST
November 30, 2000



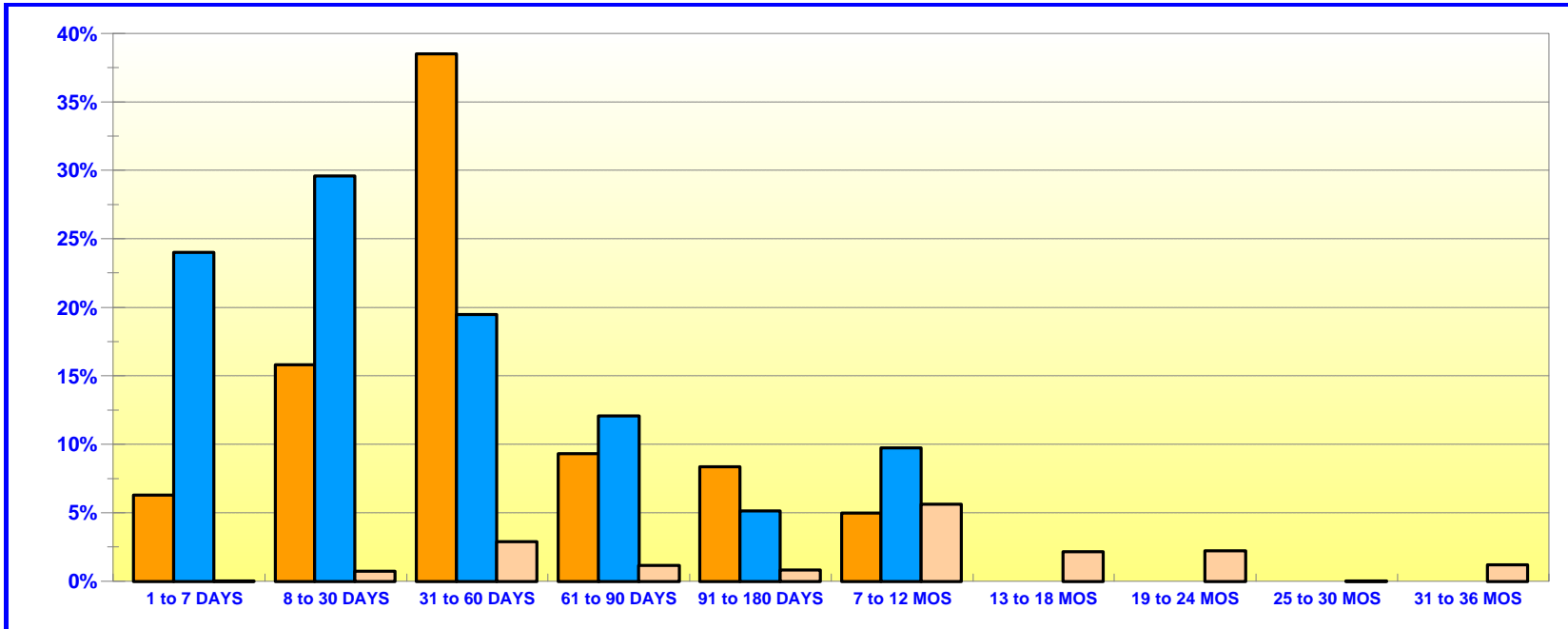
O.C. INVESTMENT POOL EXTENDED FUND		
	In Thousands	%
1 TO 6 MOS	\$116,570	33.29%
7 TO 12 MOS	116,970	33.40%
13 TO 18 MOS	45,060	12.87%
19 TO 24 MOS	46,594	13.30%
25 TO 30 MOS	0	0.00%
31 TO 36 MOS	<u>\$25,000</u>	<u>7.14%</u>
TOTAL	<u>\$350,194</u>	<u>100.00%</u>

Maturity Limits Are In Compliance With The Orange County Treasurer's Investment Policy Statement

Floating Rate Notes are deemed to have a maturity date equal to their next interest reset date.
 At November 30, 2000, Floating Rate Notes comprise 4.28% of the O.C. Extended Fund

ORANGE COUNTY TREASURER - TAX COLLECTOR
ORANGE COUNTY AND EDUCATIONAL INVESTMENT POOLS
MATURITIES DISTRIBUTION AT COST

November 30, 2000



O.C. INVESTMENT POOL				
			In Thousands	%
Money Market Fund	1 TO 7 DAYS		\$131,354	6.29%
Money Market Fund	8 TO 30 DAYS		330,191	15.81%
Money Market Fund	31 TO 60 DAYS		803,862	38.50%
Money Market Fund	61 TO 90 DAYS		194,316	9.30%
Money Market Fund	91 TO 180 DAYS		174,346	8.35%
Money Market Fund	7 TO 12 MOS		103,925	4.98%
Extended Fund	8 TO 30 DAYS		14,995	0.72%
Extended Fund	31 TO 60 DAYS		60,186	2.88%
Extended Fund	61 TO 90 DAYS		24,172	1.16%
Extended Fund	91 TO 180 DAYS		17,217	0.82%
Extended Fund	7 TO 12 MOS		116,970	5.60%
Extended Fund	13 TO 18 MOS		45,060	2.16%
Extended Fund	19 TO 24 MOS		46,593	2.23%
Extended Fund	25 TO 30 MOS		0	0.00%
Extended Fund	31 TO 36 MOS		25,000	1.20%
TOTAL			<u>\$2,088,187</u>	<u>100.00%</u>

O.C. EDUCATIONAL INVESTMENT POOL		
	In Thousands	%
1 TO 7 DAYS	\$232,125	24.00%
8 TO 30 DAYS	286,299	29.60%
31 TO 60 DAYS	188,271	19.47%
61 TO 90 DAYS	116,723	12.07%
91 TO 180 DAYS	49,601	5.13%
7 TO 12 MOS	<u>94,071</u>	<u>9.73%</u>
TOTAL	<u>\$967,090</u>	<u>100.00%</u>

Maturity Limits Are In Compliance With The Orange County Treasurer's Investment Policy Statement

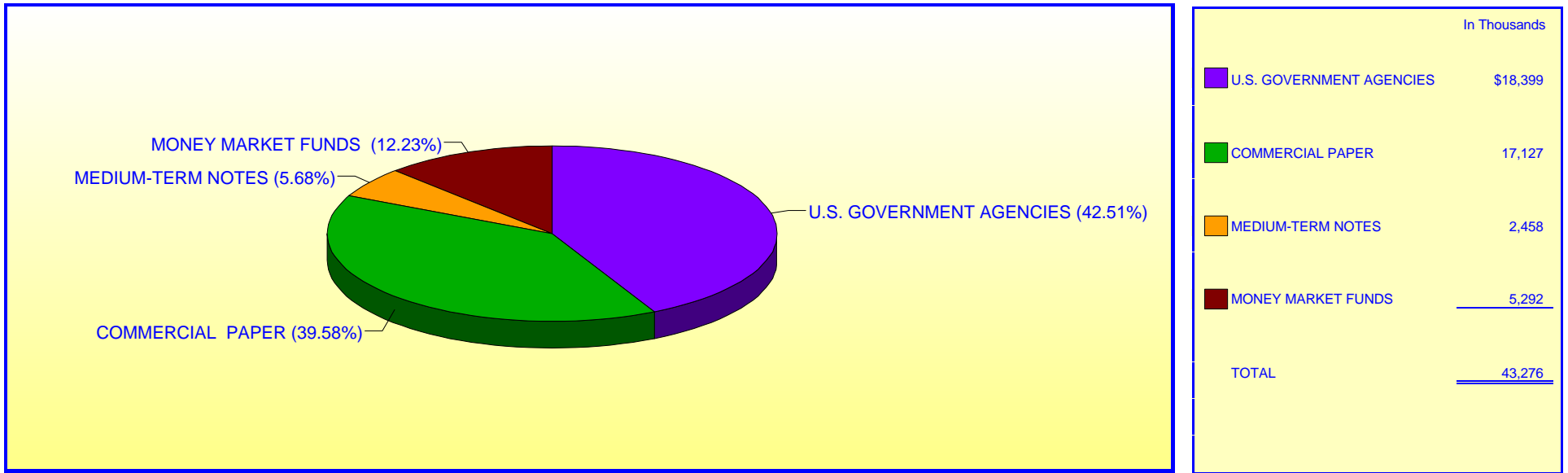
Floating Rate Notes are deemed to have a maturity date equal to their next interest reset date.
 At November 30, 2000, Floating Rate Notes comprise 9.82% and 9.30% of the O.C. Commingled Investment Pool and Educational Investment Pool, respectively.

ORANGE COUNTY TREASURER - TAX COLLECTOR

JOHN WAYNE AIRPORT INVESTMENT POOL

PORTFOLIO COMPOSITION **

November 30, 2000

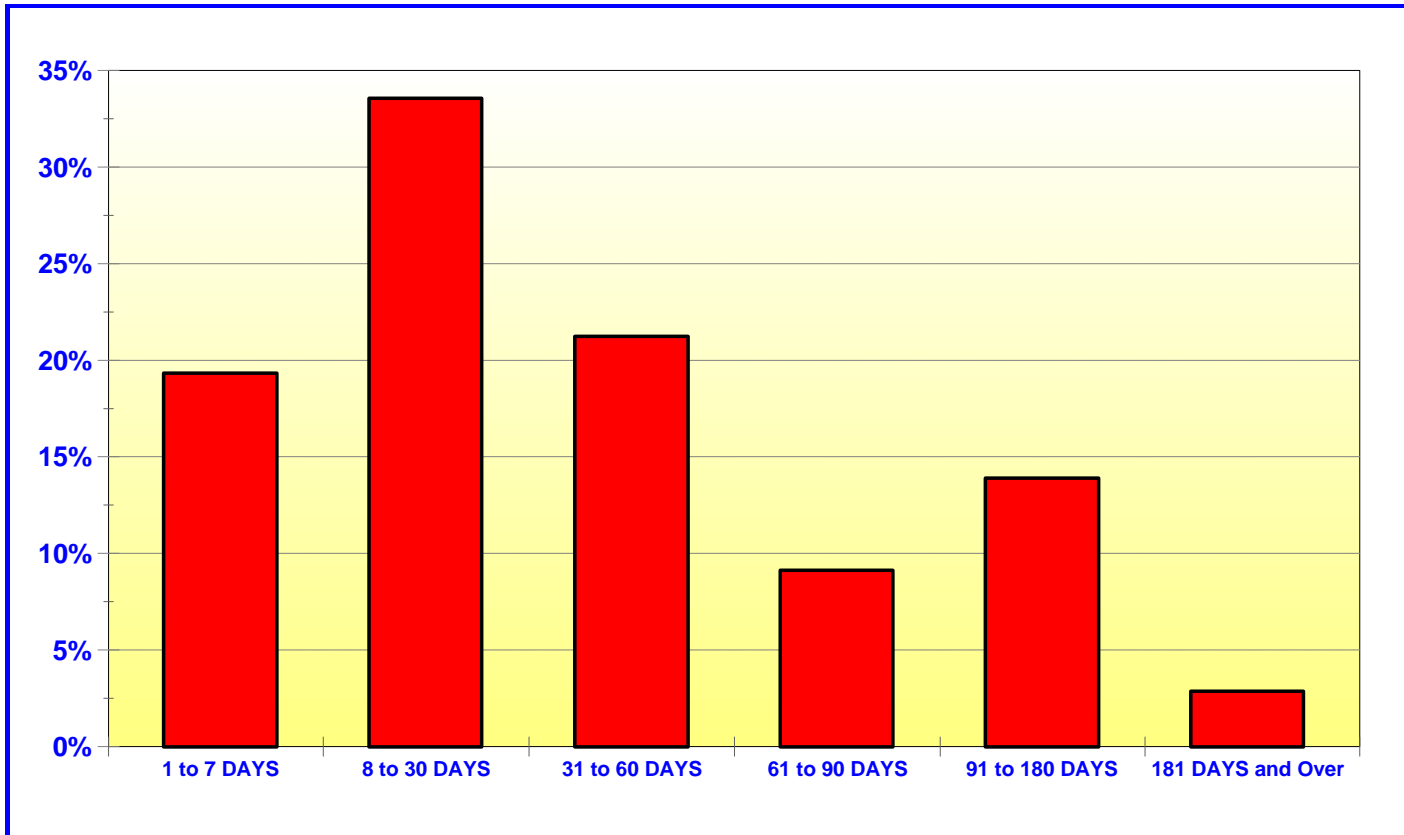


Investment Composition Is In Compliance With The Orange County Treasurer's Investment Policy Statement

**** Calculated Based Upon Market Value at 11/30/00**

ORANGE COUNTY TREASURER - TAX COLLECTOR
JOHN WAYNE AIRPORT INVESTMENT POOL
MATURITIES DISTRIBUTION AT COST

November 30, 2000



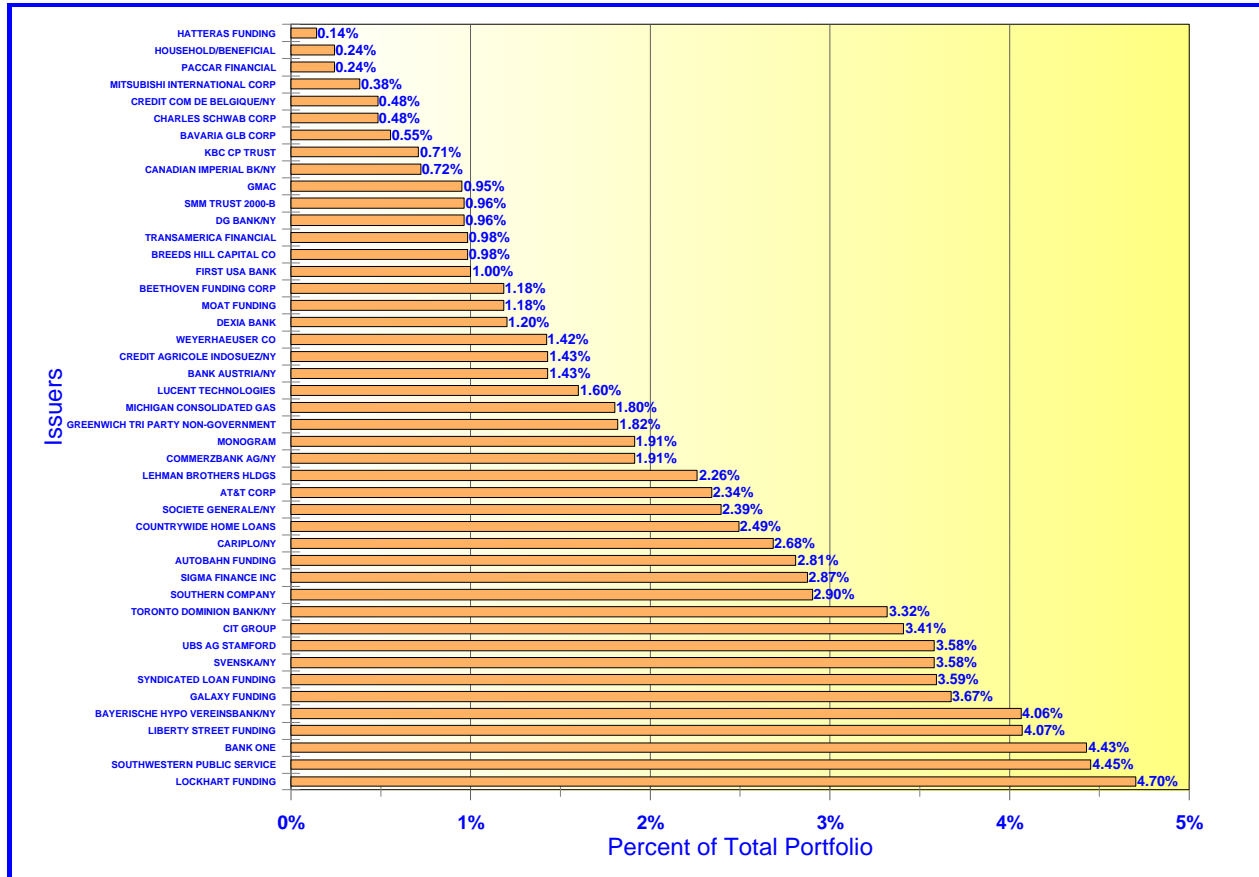
JOHN WAYNE AIRPORT		
	In Thousands	%
1 TO 7 DAYS	\$8,347	19.33%
8 TO 30 DAYS	14,488	33.56%
31 TO 60 DAYS	9,163	21.22%
61 TO 90 DAYS	3,941	9.13%
91 TO 180 DAYS	5,998	13.89%
181 DAYS and Over	<u>1,240</u>	<u>2.87%</u>
TOTAL	<u>\$43,177</u>	<u>100.00%</u>

Maturity Limits Are In Compliance With The Orange County Treasurer's Investment Policy Statement

ORANGE COUNTY TREASURER - TAX COLLECTOR

ORANGE COUNTY INVESTMENT POOL - ISSUER CONCENTRATION

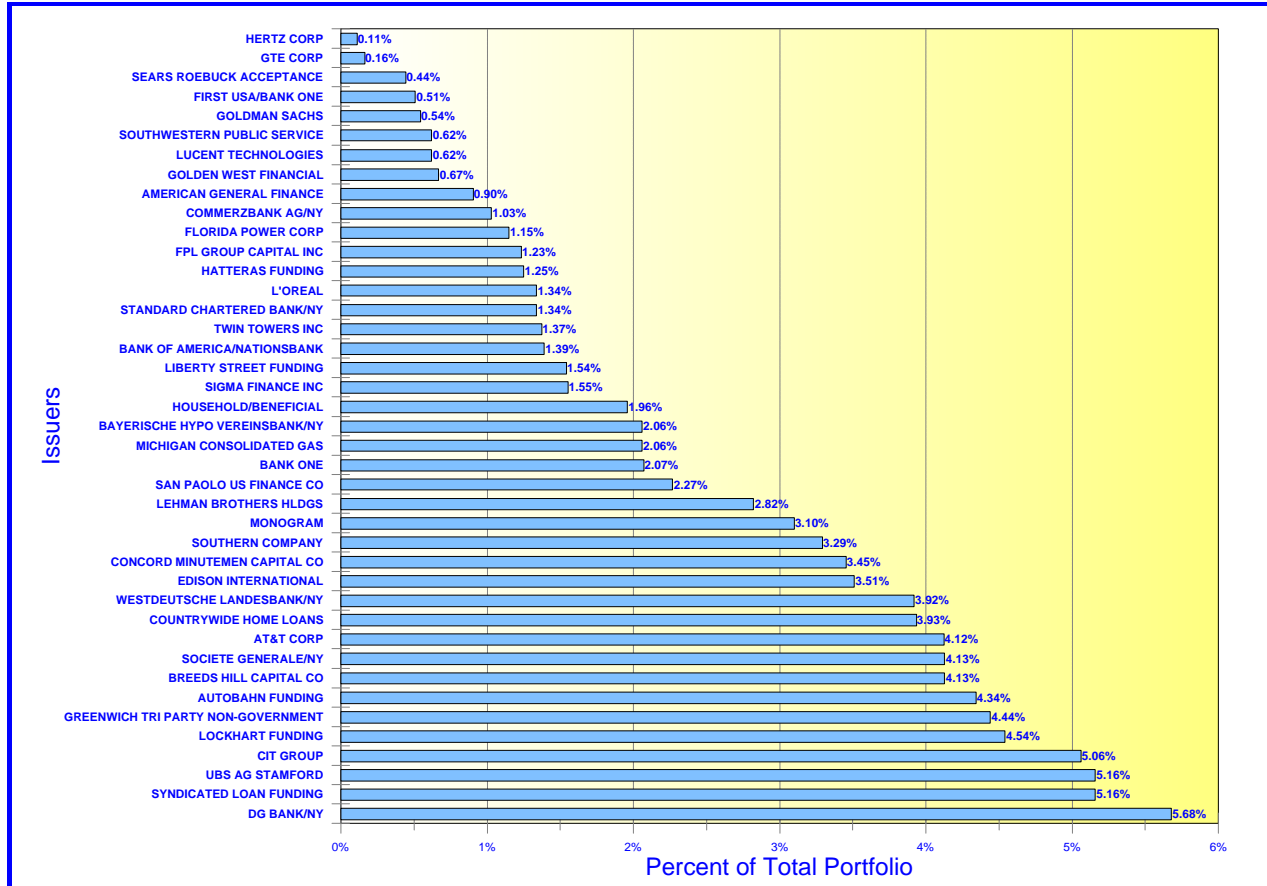
November 30, 2000



ORANGE COUNTY TREASURER - TAX COLLECTOR

EDUCATIONAL INVESTMENT POOL - ISSUER CONCENTRATION

November 30, 2000



NOTE: See noncompliance report summary for issuers over 5%