

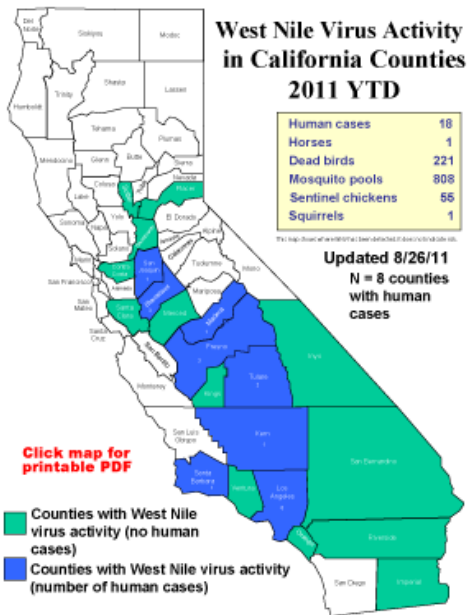
August 26, 2011

1719 W. 17th St. Santa Ana, CA 92706, (714) 834-8180

West Nile Virus (WNV) and Typhus Update

Orange County has reported its first human case of West Nile Virus this year. Consider WNV infection in your patients with aseptic meningitis, encephalitis, or prolonged fever and submit specimens for WNV testing. For more information, see www.ochealthinfo.com/epi/wnv.

- The first human case of WNV this season has been reported in an adult male who experienced onset of symptoms in mid-August and was hospitalized with neuroinvasive disease (WNND).
- Diagnosis is best made by serology (IgM or paired acute and convalescent IgG) for WNV. WNV IgM may be negative early in the course of the disease and may cross react with other flaviviruses. Repeat serology may be indicated if initial testing done in the first 10 days after onset of symptoms is negative.
- WNV infection, aseptic meningitis, and encephalitis are all reportable diseases and should be reported within one working day to OC Epidemiology via phone (714-834-8180) or fax (714-834-8196).



West Nile Virus Update 2011

Orange County:

- One human case of WNND has been reported. Birds and mosquitoes have also tested positive for WNV in Orange County. To report dead birds, call Orange County Vector Control at 714-971-2421 x 117.

California:

- As of August 26, 18 human cases of WNV have been reported from 8 local health jurisdictions: Fresno (3), Kern (1), Los Angeles (6), Madera (1), San Joaquin (1), Santa Barbara (1), Stanislaus (3), and Tulare (2). One additional asymptomatic presumptive viremic blood donor has been reported.

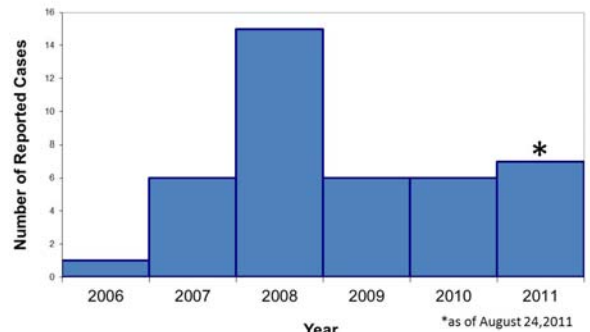
United States:

- As of August 23, 77 human cases of WNV, including 3 deaths have been reported to the CDC. Thirty presumptive viremic blood donors have also been reported. States with highest number of reported cases include Arizona, California, Mississippi, and Florida.

Typhus in Orange County

- Four cases of endemic (flea-borne) typhus have been reported in the past two months. Signs and symptoms of typhus may include fever, headache, myalgia, rash, aseptic meningitis, transaminitis, thrombocytopenia, and/or leukopenia. All rickettsial infections should be reported to OC Epidemiology within 7 calendar days.
- Given the cross-reactivity in serology among rickettsial species, serum should be sent for *R. typhi* and *R. rickettsii* IgM and IgG on suspect cases. Initial testing may be negative early in illness. Whole blood (5 ml in EDTA) for polymerase chain reaction testing on acute suspect cases may be arranged through OC Epidemiology if indicated.
- Empiric therapy with doxycycline should be started in suspect cases pending laboratory confirmation as testing turnaround may take several days and early treatment can prevent severe and fatal infections.
- See www.ochealthinfo.com/epi/typhus for more information.

Endemic Typhus Cases by Year of Report* Orange County, CA



For comments or suggestions on this newsletter, please contact Sandra Nutter, MPH, or Dr. Michele Cheung at (714) 834-8180. To receive this newsletter by email, please contact us at epi@ochca.com.